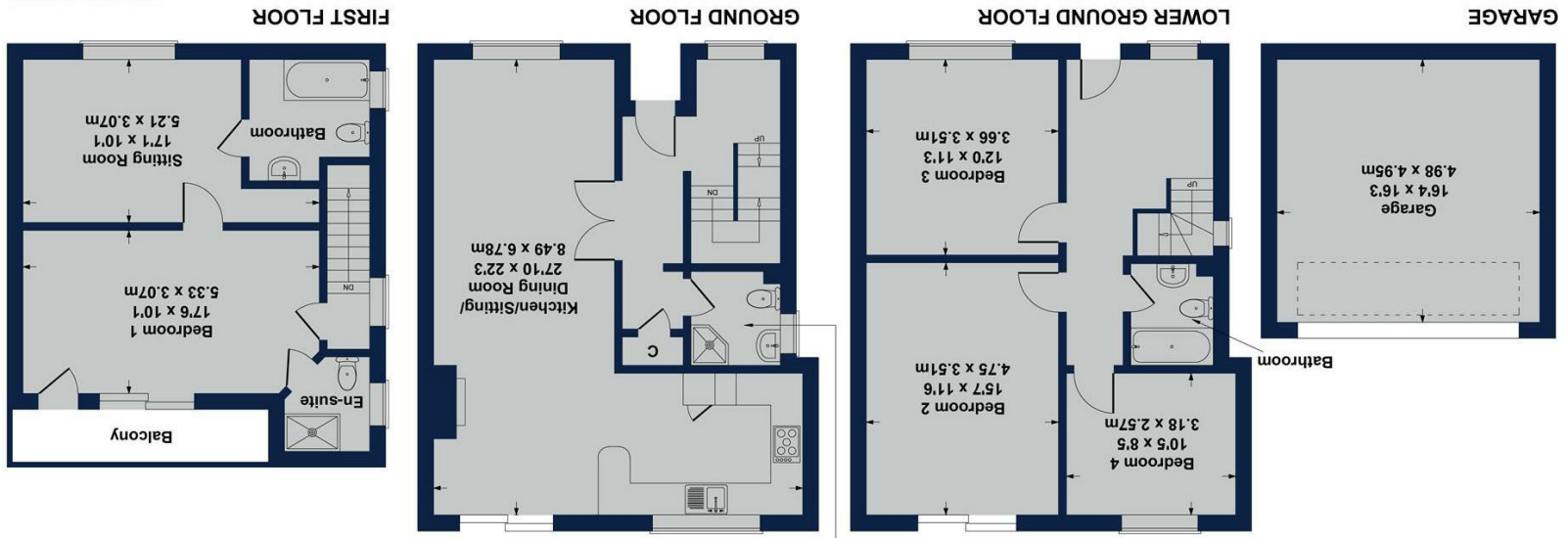
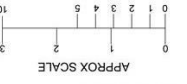


Produced by The Plan Portal/ptplans Ltd. 2026
SKETCH PLAN FOR ILLUSTRATIVE PURPOSES ONLY



Harbour Lights, Victoria Road, Dartmouth, TQ6 9EG
Approximate Gross Internal Area
1899 sq ft - 176 sq m



Harbour Lights, Meadow Court Victoria Road, Dartmouth, TQ6 9EG

A detached and elevated property facing south with fabulous views over the fields, down the valley towards the town and River Dart.

A beautifully presented home, where you can get away from the hustle and bustle of the town, pride of ownership is reflected throughout, it is immaculate. This home is deceptively large and can sleep 8. The property has been an excellent holiday let in the past and is large enough for those family reunions and special anniversaries. The property enjoys spacious and flexible accommodation arranged over 3 floors. There is no onward chain.

DIRECTIONS:

From our office in Market Street turn left, then take the turn right onto Victoria Road. Carry on up Victoria Road until you reach Cistern Meadow. Walk up Cistern Meadow and Harbour Lights will be ahead on your right.

THE ACCOMMODATION COMPRISES:

Enter the spacious entrance hall with stairs leading to all floors and access into the beautifully light, dual aspect open-plan kitchen/lounge/dining room. The kitchen area has a lovely outlook with a great range of wall and under bench units. There is a Smeg gas 5 ring gas hob, Bosch electric oven, fridge/freezer, dishwasher, microwave and washing machine/drier. The adjacent dining area has access to the balcony, that has wonderful far reaching rural views down to the River Dart. There is also a shower, W.C, and wash hand basin on this level.

The Lower Ground Floor has 3 double bedrooms and a bathroom with W.C, wash hand basin and bath with a shower over it.

On the first floor is the ensuite Principal Bedroom. To the front of the property is the Sitting Room. This offers a private retreat, should the activity on the central floor get too boisterous. The Sitting Room has its own balcony and the most wonderful views.



OWNERS COMMENTS:

To say we have loved our holiday time here at Harbour Lights would be an understatement. When the sun shines, Harbour Lights really comes into its own, facing south and with all the balconies and outside patios to chill out on. The open plan and spacious interior, has meant we have all been able to relax and enjoy our Dartmouth breaks. There has been no stress with the travelling down, in the knowledge that our trustee steed will be stabled! The double garage has been a real bonus. Once we have settled in, the walk downtown has been exciting to familiarise ourselves again with all the wonderful Dartmouth attractions.

SERVICES

Mains electric, water and drainage. Gas central heating.

LOCAL AUTHORITY

South Hams District Council

COUNCIL TAX BAND: E

EPC: D

CONSUMER PROTECTION FROM UNFAIR TRADING

These details are for guidance only and complete accuracy cannot be guaranteed. If there is any point, which is of particular importance, verification should be obtained. They do not constitute a contract or part of a contract. All measurements are approximate. No guarantee can be given with regards to planning permissions or fitness for purpose. No apparatus, equipment, fixture or fitting has been tested. Items shown in photographs are NOT necessarily included. Interested parties are advised to check availability and make an appointment to view before travelling to see a property.

